



**Features**

- Compact design to save board space - 0805 footprint
- Small size results in very fast time to react to fault events
- Low profile
- RoHS compliant\* and halogen free\*\*
- Agency recognition:

**Applications**

- USB port protection - USB 2.0, 3.0 & OTG
- HDMI 1.4 Source protection
- PC motherboards - Plug and Play protection
- Mobile phones - Battery and port protection
- PDAs / digital cameras
- Game console port protection

**PRCP-PSMF Series - Polymer Resettable Circuit Protectors**

**Electrical Characteristics**

Model	V max. Volts	I max. Amps	I <sub>hold</sub>	I <sub>trip</sub>	Resistance		Max. Time To Trip		Tripped Power Dissipation
			Amperes at 23 °C		Ohms at 23 °C		Amperes at 23 °C	Seconds at 23 °C	Watts at 23 °C
			Hold	Trip	R <sub>Min.</sub>	R <sub>1Max.</sub>			Typ.
PRCP-PSMF010X	15	40	0.10	0.30	1.0	7.5	0.5	1.5	0.5
PRCP-PSMF020X	9	40	0.20	0.50	0.65	3.5	8.00	0.02	0.5
PRCP-PSMF035X	6	40	0.35	0.75	0.250	1.200	8.00	0.10	0.5
PRCP-PSMF050X	6	40	0.50	1.00	0.150	0.900	8.00	0.10	0.5
PRCP-PSMF075X	6	40	0.75	1.50	0.090	0.350	8.00	0.20	0.6
PRCP-PSMF110X	6	40	1.10	2.20	0.060	0.210	8.00	0.30	0.6

**Environmental Characteristics**

Operating Temperature .....-40 °C to +85 °C  
 Maximum Device Surface Temperature  
 in Tripped State .....125 °C  
 Passive Aging.....+85 °C, 1000 hours .....± 5 % typical resistance change  
 Humidity Aging.....+85 °C, 85 % R.H. 1000 hours .....± 5 % typical resistance change  
 Thermal Shock.....+85 °C to -40 °C, 20 times .....±10 % typical resistance change  
 Solvent Resistance .....MIL-STD-202, Method 215 .....No change  
 Vibration .....MIL-STD-883C, Method 2007.1, .....No change  
 Condition A

**Test Procedures And Requirements For Model PRCP-PSMF Series**

Test	Test Conditions	Accept/Reject Criteria
Visual/Mech.....	Verify dimensions and materials .....	Per P.R.C.P. physical description
Resistance .....	In still air @ 23 °C.....	R <sub>min</sub> ≤ R ≤ R <sub>1max</sub>
Time to Trip .....	At specified current, V <sub>max</sub> , 23 °C .....	T ≤ max. time to trip (seconds)
Hold Current .....	30 min. at I <sub>hold</sub> .....	No trip
Trip Cycle Life .....	V <sub>max</sub> , I <sub>max</sub> , 100 cycles.....	No arcing or burning
Trip Endurance .....	V <sub>max</sub> , 48 hours .....	No arcing or burning
Solderability .....	ANSI/J-STD-002 .....	95 % min. coverage

UL File Number.....E300792  
 TÜV Certificate Number.....R50383882

**Thermal Derating Chart - I<sub>hold</sub> / I<sub>trip</sub> (Amps)**

Model	Ambient Operating Temperature								
	-40 °C	-20 °C	0 °C	23 °C	40 °C	50 °C	60 °C	70 °C	85 °C
PRCP-PSMF010X	0.15 / 0.45	0.13 / 0.39	0.12 / 0.36	0.10 / 0.30	0.09 / 0.27	0.08 / 0.24	0.07 / 0.21	0.06/0.18	0.05 / 0.15
PRCP-PSMF020X	0.28 / 0.70	0.25 / 0.63	0.23 / 0.58	0.20 / 0.50	0.17 / 0.43	0.14 / 0.35	0.12 / 0.30	0.10/0.25	0.07 / 0.18
PRCP-PSMF035X	0.47 / 1.01	0.44 / 0.94	0.39 / 0.84	0.35 / 0.75	0.30 / 0.64	0.27 / 0.58	0.24 / 0.51	0.20/0.43	0.14 / 0.30
PRCP-PSMF050X	0.68 / 1.36	0.62 / 1.24	0.55 / 1.10	0.50 / 1.00	0.40 / 0.80	0.37 / 0.74	0.33 / 0.66	0.29/0.58	0.23 / 0.46
PRCP-PSMF075X	1.00 / 2.00	0.90 / 1.80	0.79 / 1.58	0.75 / 1.50	0.63 / 1.26	0.57 / 1.14	0.53 / 1.06	0.42/0.84	0.35 / 0.70
PRCP-PSMF110X	1.45 / 2.90	1.35 / 2.70	1.20 / 2.40	1.10 / 2.20	0.92 / 1.84	0.84 / 1.68	0.75 / 1.50	0.65/1.30	0.52 / 1.04

\*RoHS Directive 2015/863, Mar. 31 2015 and Annex.

\*\*To be considered halogen free, each homogenous material can have a maximum concentration of 900 ppm of either bromine or chlorine.

Specifications are subject to change without notice.  
 Customers should verify actual device performance in their specific applications.

**Additional Applications**

- Automotive electronic control modules

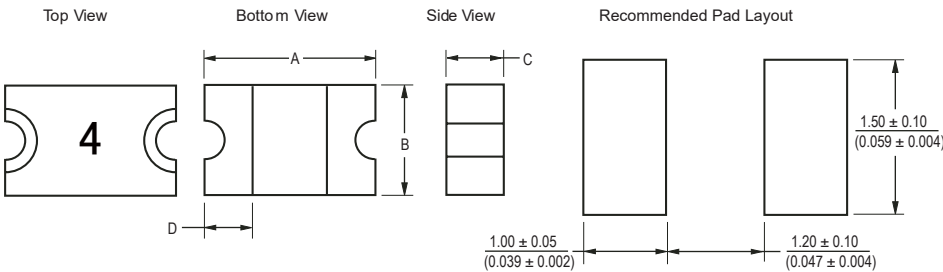
**PRCP-PSMF Series - Polymer Resettable Circuit Protectors**

**Product Dimensions**

Model	A		B		C		D
	Min.	Max.	Min.	Max.	Min.	Max.	Min.
PRCP-PSMF010X	$\frac{2.00}{(0.079)}$	$\frac{2.30}{(0.091)}$	$\frac{1.20}{(0.047)}$	$\frac{1.50}{(0.059)}$	$\frac{0.48}{(0.019)}$	$\frac{0.85}{(0.033)}$	$\frac{0.20}{(0.008)}$
PRCP-PSMF020X	$\frac{2.00}{(0.079)}$	$\frac{2.30}{(0.091)}$	$\frac{1.20}{(0.047)}$	$\frac{1.50}{(0.059)}$	$\frac{0.48}{(0.019)}$	$\frac{0.85}{(0.033)}$	$\frac{0.20}{(0.008)}$
PRCP-PSMF035X	$\frac{2.00}{(0.079)}$	$\frac{2.30}{(0.091)}$	$\frac{1.20}{(0.047)}$	$\frac{1.50}{(0.059)}$	$\frac{0.48}{(0.019)}$	$\frac{0.85}{(0.033)}$	$\frac{0.20}{(0.008)}$
PRCP-PSMF050X	$\frac{2.00}{(0.079)}$	$\frac{2.30}{(0.091)}$	$\frac{1.20}{(0.047)}$	$\frac{1.50}{(0.059)}$	$\frac{0.48}{(0.019)}$	$\frac{0.85}{(0.033)}$	$\frac{0.20}{(0.008)}$
PRCP-PSMF075X	$\frac{2.00}{(0.079)}$	$\frac{2.30}{(0.091)}$	$\frac{1.20}{(0.047)}$	$\frac{1.50}{(0.059)}$	$\frac{0.75}{(0.030)}$	$\frac{1.25}{(0.049)}$	$\frac{0.20}{(0.008)}$
PRCP-PSMF110X	$\frac{2.00}{(0.079)}$	$\frac{2.30}{(0.091)}$	$\frac{1.20}{(0.047)}$	$\frac{1.50}{(0.059)}$	$\frac{0.75}{(0.030)}$	$\frac{1.25}{(0.049)}$	$\frac{0.20}{(0.008)}$

Packaging: 3000 pcs. per reel.

DIMENSIONS =  $\frac{\text{MM}}{(\text{INCHES})}$

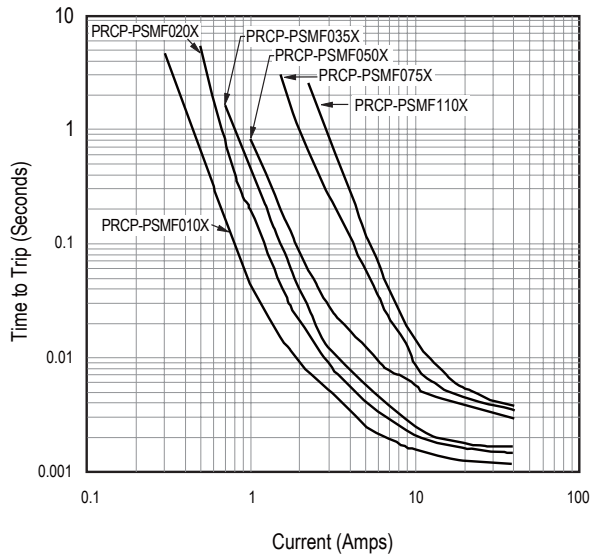


Terminal material:  
Nickel/gold plated.

Termination pad solderability:  
Standard Au finish:  
Meets ANSI/J-STD-002 Category 2.

Recommended Storage:  
40 °C max./70 % RH max.

**Typical Time to Trip at 23 °C**



The Time to Trip curves represent typical performance of a device in a simulated application environment. Actual performance in specific customer applications may differ from these values due to the influence of other variables.

**How to Order**

PRCP-PSMF 050 X - 2 C

Product Designator

Series  PSMF = 0805 SurfaceMount Component

Hold Current, I<sub>hold</sub>  010-110 (0.10 - 1.10 Amps)

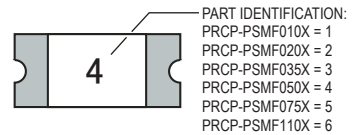
Product Shape

Packaging  Packaged per EIA 481-1  
-2 = Tape and Reel

Halogen Free

**Typical Part Marking**

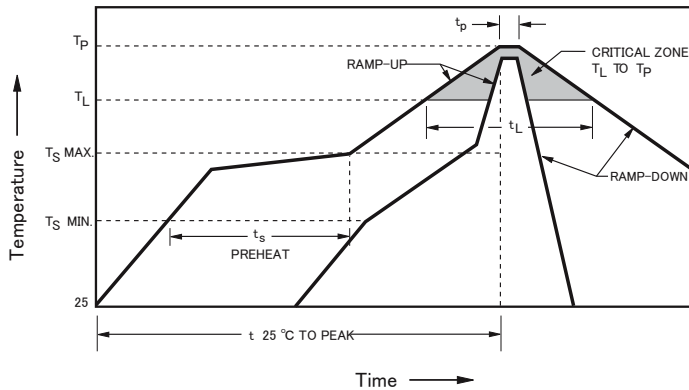
Represents total content. Layout may vary.



BIWEEKLY DATE CODE WILL APPEAR ON THE PACKAGING LABEL:  
WEEK 1 AND 2 = A  
WEEK 51 AND 52 = Z

# PRCP-PSMF Series - Polymer Resettable Circuit Protectors

## Solder Reflow Recommendations



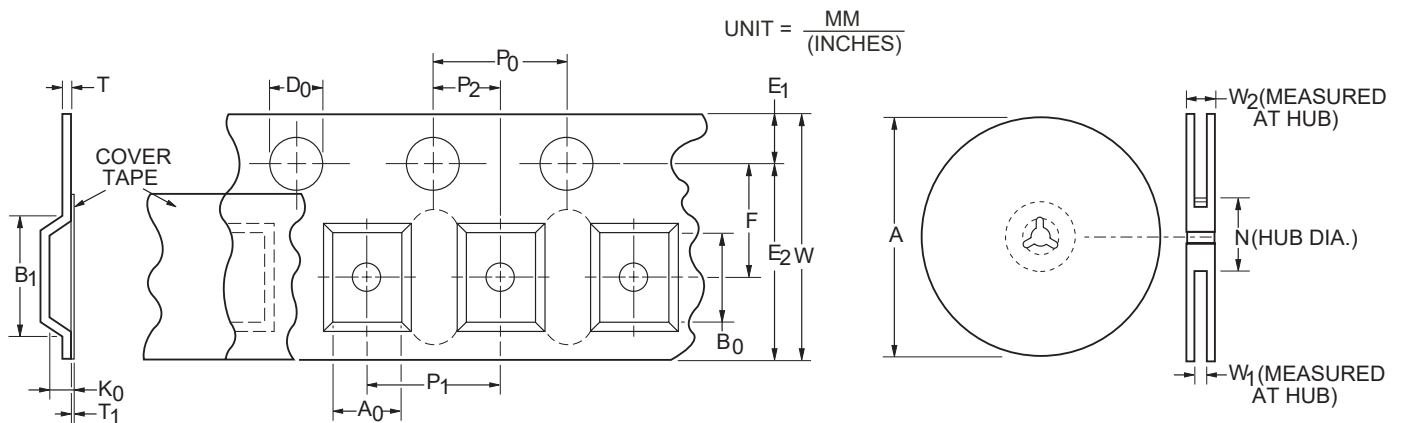
**Notes:**

- PRCP-PSMF models are intended for reflow soldering (including, but not limited to heating plate, hot air, IR, nitrogen, and vapor phase).
- Wave soldering is permissible only if the device is on the top of the PCB, opposite the heat source.
- Hand soldering is not recommended for these devices.
- All temperatures refer to the topside of the device, measured on the device body surface.
- If reflow temperatures exceed the recommended profile, devices may not meet the published specifications.
- Compatible with Pb and Pb-free solder reflow profiles.
- Excess solder may cause a short circuit.

Profile Feature	Pb-Free Assembly
Average Ramp-Up Rate (Ts_max to Tp)	3 °C / second max.
PREHEAT: Temperature Min. (Ts_min) Temperature Max. (Ts_max) Time (Ts_min to Ts_max) (ts)	150 °C 200 °C 60~180 seconds
TIME MAINTAINED ABOVE: Temperature (Tl) Time (tl)	217 °C 60~150 seconds
Peak Temperature (Tp)	260 °C
Time within 5 °C of Actual Peak Temperature (tp)	20~40 seconds
Ramp-Down Rate	6 °C / second max.
Time 25 °C to Peak Temperature	8 minutes max.

**PRCP-PSMF Series Tape and Reel Specifications**

Tape Dimensions	PRCP-PSMF010X, PRCP-PSMF020X, PRCP-PSMF035X & PRCP-PSMF050X	PRCP-PSMF075X & PRCP-PSMF110X
	per EIA 481-1	per EIA 481-1
W	$\frac{8.0 \pm 0.30}{(0.315 \pm 0.012)}$	$\frac{8.0 \pm 0.30}{(0.315 \pm 0.012)}$
P <sub>0</sub>	$\frac{4.0 \pm 0.10}{(0.157 \pm 0.004)}$	$\frac{4.0 \pm 0.10}{(0.157 \pm 0.004)}$
P <sub>1</sub>	$\frac{4.0 \pm 0.10}{(0.157 \pm 0.004)}$	$\frac{4.0 \pm 0.10}{(0.157 \pm 0.004)}$
P <sub>2</sub>	$\frac{2.0 \pm 0.05}{(0.079 \pm 0.002)}$	$\frac{2.0 \pm 0.05}{(0.079 \pm 0.002)}$
A <sub>0</sub>	$\frac{1.65 \pm 0.10}{(0.065 \pm 0.004)}$	$\frac{1.65 \pm 0.10}{(0.065 \pm 0.004)}$
B <sub>0</sub>	$\frac{2.4 \pm 0.10}{(0.094 \pm 0.004)}$	$\frac{2.4 \pm 0.10}{(0.094 \pm 0.004)}$
B <sub>1</sub> max.	$\frac{4.35}{(0.171)}$	$\frac{4.35}{(0.171)}$
D <sub>0</sub>	$\frac{1.50 + 0.10/-0.0}{(0.059 + 0.004/-0)}$	$\frac{1.50 + 0.10/-0.0}{(0.059 + 0.004/-0)}$
F	$\frac{3.5 \pm 0.05}{(0.138 \pm 0.002)}$	$\frac{3.5 \pm 0.05}{(0.138 \pm 0.002)}$
E <sub>1</sub>	$\frac{1.75 \pm 0.10}{(0.069 \pm 0.004)}$	$\frac{1.75 \pm 0.10}{(0.069 \pm 0.004)}$
E <sub>2</sub> min.	$\frac{6.25}{(0.246)}$	$\frac{6.25}{(0.246)}$
T max.	$\frac{0.6}{(0.024)}$	$\frac{0.6}{(0.024)}$
T <sub>1</sub> max.	$\frac{0.10}{(0.004)}$	$\frac{0.10}{(0.004)}$
K <sub>0</sub>	$\frac{0.95 \pm 0.10}{(0.037 \pm 0.004)}$	$\frac{1.25 \pm 0.10}{(0.049 \pm 0.004)}$
Leader min.	$\frac{390}{(15.35)}$	$\frac{390}{(15.35)}$
Trailer min.	$\frac{160}{(6.30)}$	$\frac{160}{(6.30)}$
Reel Dimensions		
A max.	$\frac{185}{(7.28)}$	$\frac{185}{(7.28)}$
N min.	$\frac{50}{(1.97)}$	$\frac{50}{(1.97)}$
W <sub>1</sub>	$\frac{8.4 + 1.5/-0.0}{(0.331 + 0.059/-0)}$	$\frac{8.4 + 1.5/-0.0}{(0.331 + 0.059/-0)}$
W <sub>2</sub> max.	$\frac{14.4}{(0.567)}$	$\frac{14.4}{(0.567)}$



Specifications are subject to change without notice.  
Customers should verify actual device performance in their specific applications.