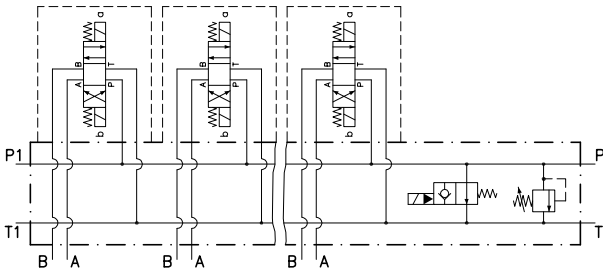


Technical features



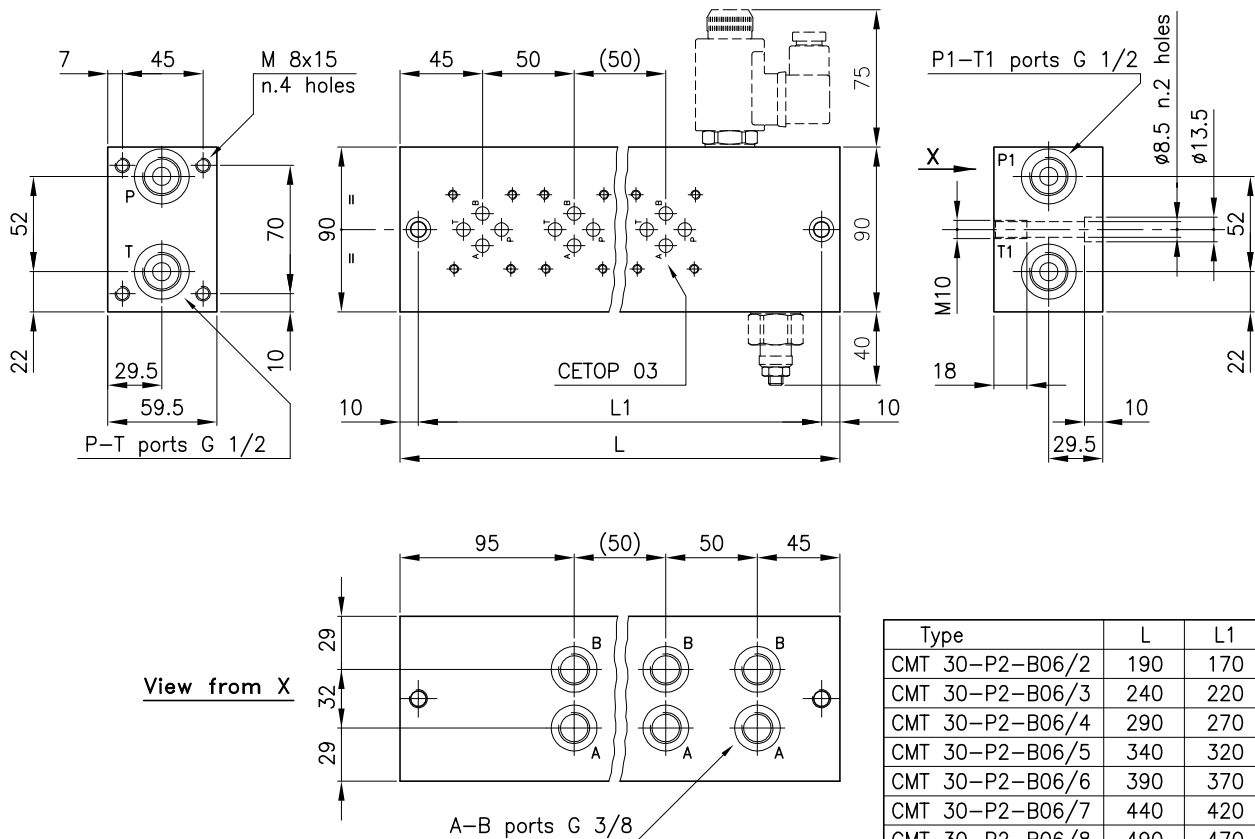
These are basic modular plates paralleling connected for solenoid valve provided with a connection surface CETOP R35 H-4.2-4-03.

Standard version in alluminium (max. pressure 315 bar). On request available also in steel.

The plates CMT 30-P2 show n° 2 cavities S 30/2 and are arranged for assembling unloading solenoid valve and pressure relief valve of the Series 30.

The cartridge valves Series 30 are to be ordered separately.

Dimensions



Type	L	L1
CMT 30-P2-B06/2	190	170
CMT 30-P2-B06/3	240	220
CMT 30-P2-B06/4	290	270
CMT 30-P2-B06/5	340	320
CMT 30-P2-B06/6	390	370
CMT 30-P2-B06/7	440	420
CMT 30-P2-B06/8	490	470

Ordering informations

CMT 30-P2-B06/3

Valves type _____

Parallel connection
(Pre-arrangement for pressure relief valve
and unloading solenoid valve) _____

A e B ports
B06 = G 3/8 _____

Sections number _____

Codes:

CMT 30-P2-B06/2	38 144 164
CMT 30-P2-B06/3	38 144 165
CMT 30-P2-B06/4	38 144 166
CMT 30-P2-B06/5	38 144 167
CMT 30-P2-B06/6	38 144 168
CMT 30-P2-B06/7	38 144 169
CMT 30-P2-B06/8	38 144 170