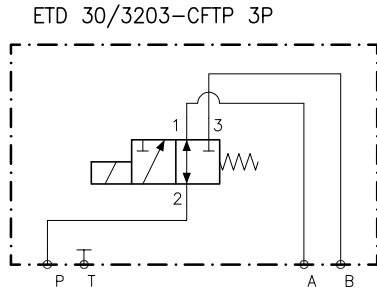
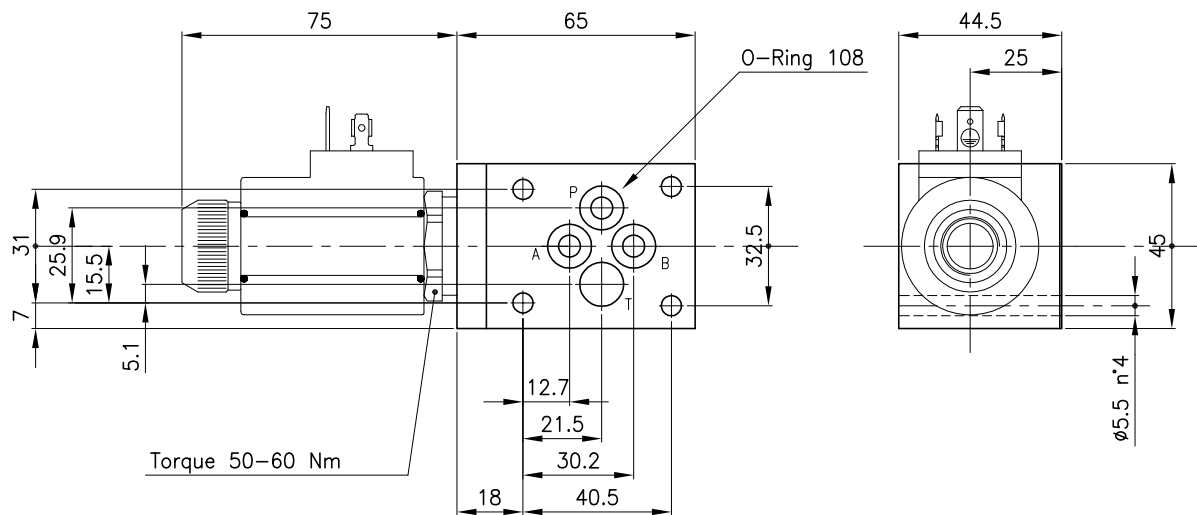


Schema



Valve	(For features see catalogue 09.050)	ETD 30/3203
Cavity	(For dimensions see catalogue 17.000)	S 30/3
Max. flow	(l/min.)	30
Max. pressure	(bar)	210
Fluid viscosity range	(cSt)	2.8 - 380
Fluid temperature range	(°C)	-20 +80
Mass	(aluminium body only) (kg)	0.360
Hydraulic fluid; mineral oil HM and HV		ISO 6074
Recommended filtration; 19/15 ISO 4466 (25 μ absolutes)		
Standard seals in Polyurethane and Buna N		
Standard body in aluminium		

Dimensions



Versions

30-CFTP 3P

Size _____
Version _____

Body:
30-CFTP 3P 38 147 260