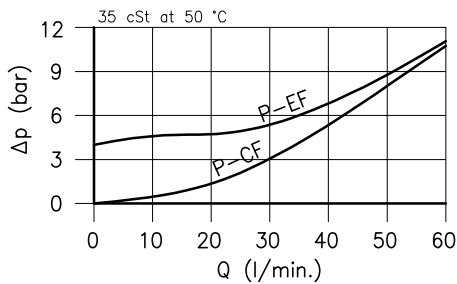
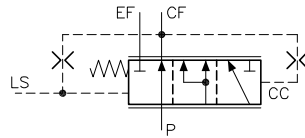


Technical features

The priority valves LSV 30 are to be used mainly on hydraulic steering systems with power steering unit type Load Sensing. These valves always assure priority to the power steering unit, automatically meter the required flow and send the overflow to port EF.

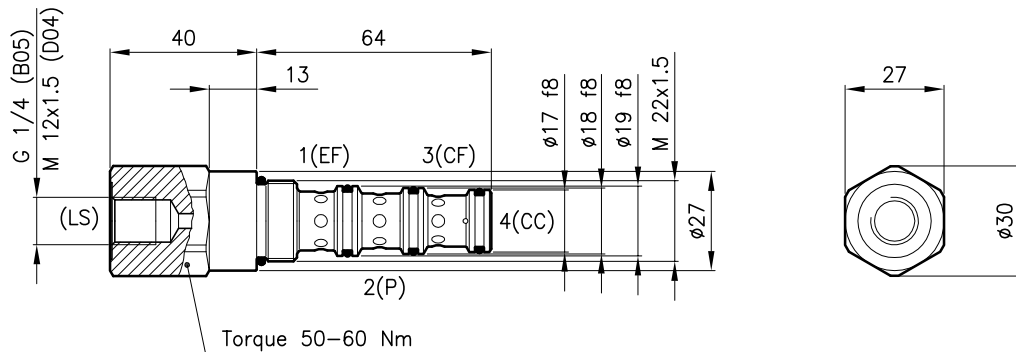
The lines P, LS, and EF must be protected with separated relief valves.



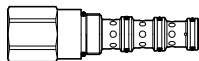
| | |
|---|-----------|
| Cavity (For dimensions see catalogue 17.000) | S 30/4 |
| Max. flow in P line (l/min.) | 60 |
| Max. flow in CF line (l/min.) | 40 |
| Max. pressure in P line (bar) | 315 |
| Max. pressure in EF line (bar) | 315 |
| Max. pressure in CF line (bar) | 250 |
| Fluid viscosity range (cSt) | 2.8 - 380 |
| Fluid temperature range (°C) | -20 +80 |
| Mass (kg) | 0.210 |
| Hydraulic fluid; mineral oil HM and HV | ISO 6074 |
| Recommended filtration; 19/15 ISO 4466 (25 μ absolutes) | |
| Standard seals in Polyurethane and Buna N | |

Connections:

- P = Pump
- CF = Priority flow (power steering)
- EF = Excedent flow (auxiliary)
- LS = Load sensing

Dimensions

Ordering informations
LSV 30B/M-D04

LSV 30B = Valve type



Standard springs

Type Setting

M = 10 bar

LS port

B05 = G 1/4

D04 = M 12x1.5

Codes:

LSV 30B/M-B05 33 011 157

LSV 30B/M-D04 33 011 145

External seals kit 90 620 105

LSV 30B valves can be assembled on standard bodies 30-CC series; for dimensions see catalogue 16.011