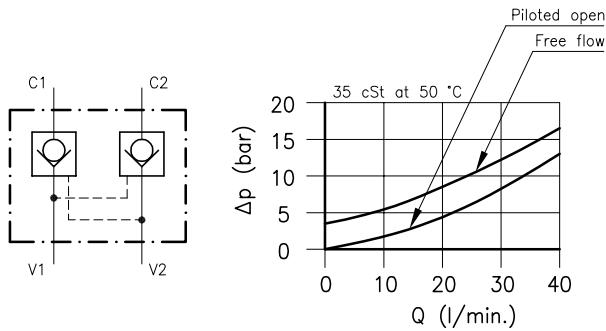
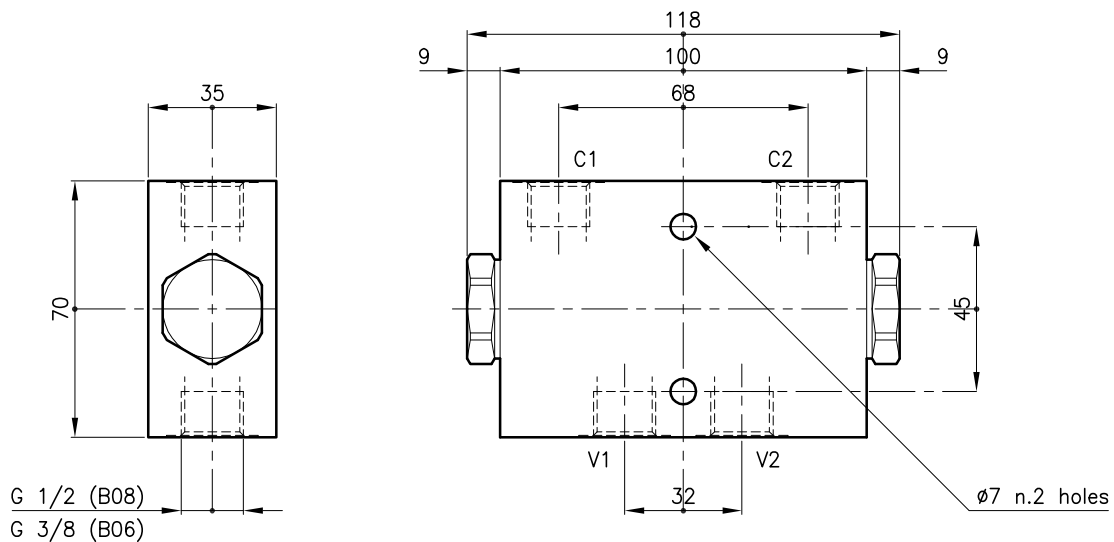


**Technical features**



Valves	(For features see catalogue 05.020)	CAB 30/M
Nominal flow	(l/min.)	30
Max. pressure	(bar)	210
Pilot ratio		5:1
Pilot volume	(cm <sup>3</sup> )	0.80
Fluid viscosity range	(cSt)	2.8 - 380
Fluid temperature range	(°C)	-20 +80
Mass	(kg)	0.870
Hydraulic fluid; mineral oil HM and HV		ISO 6074
Recommended filtration; 19/15 ISO 4466 (25 μ absolutes)		
Standard seals in Polyurethane and Buna N		

**Dimensions**



**Ordering informations**

**CAB 30/M-S-CSL 57-B08**

Valves type \_\_\_\_\_

Standard spring  
**M** = 3.5 bar \_\_\_\_\_

**S** = Without O-Ring on the pilot piston (Omit in Standard version) \_\_\_\_\_

Version \_\_\_\_\_

Standard ports  
**B06** = G 3/8 ISO 228 \_\_\_\_\_  
**B08** = G 1/2 ISO 228 \_\_\_\_\_

Codes:

CAB 30/M-CSL 57-B06      32 011 130  
CAB 30/M-CSL 57-B08      32 011 131

CAB 30/M-S-CSL 57-B06      32 011 132  
CAB 30/M-S-CSL 57-B08      32 011 133

Only body codes:

Body type 30-CSL 57-B06      38 144 106  
Body type 30-CSL 57-B08      38 144 107