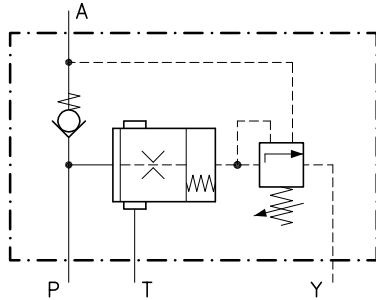


Technical features

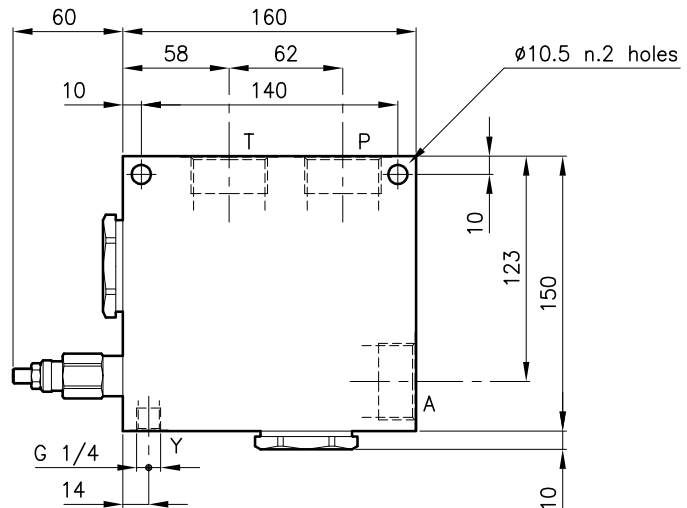
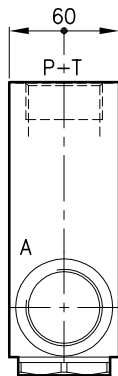
They are used to unload a pump once a certain pressure has been reached in the main circuit.

They are either used on accumulator circuit to unload the pump when the accumulator charge pressure has been reached or in a two pump circuit to unload the low pressure pump.



Valves	(For features see catalogue 04.075)	LCS 20
	(For features see catalogue 11.030)	ELP 70/P1
	(For features see catalogue 05.080)	CAE 70/P
Max. flow	(l/min.)	300
Max. pressure in P	(bar)	210
Max. pressure on A	(bar)	420
Differential area	%	88 ± 1.5 %
Fluid viscosity range	(cSt)	2.8 - 380
Fluid temperature range	(°C)	-20 +80
Mass	(kg)	5.330
Hydraulic fluid; mineral oil HM and HV		ISO 6074
Recommended filtration; 19/15 ISO 4466 (25 μ absolutes)		
Standard seals in Polyurethane and Buna N		

Dimensions



Ordering informations

DPA 70/D-N-B20

Valve type

Standard springs (LCS 20)

Type Setting range

D = 10 - 210 bar

Q = 70 - 315 bar

Adjustment type

N = Standard adjustment

Standard ports

B16 = G 1 ISO 228

B20 = G 1.1/4 ISO 228

Codes:

DPA 70/D-N-B16 71 011 155

DPA 70/Q-N-B16 71 011 156

DPA 70/D-N-B20 71 011 158

DPA 70/Q-N-B20 71 011 159

Only body codes:

Body type 70-DPA-B16 78 144 118

Body type 70-DPA-B20 78 144 119