

Unità di potenza pneumo-idraulica – versione UPP

Pneumo-hydraulic power unit – UPP version

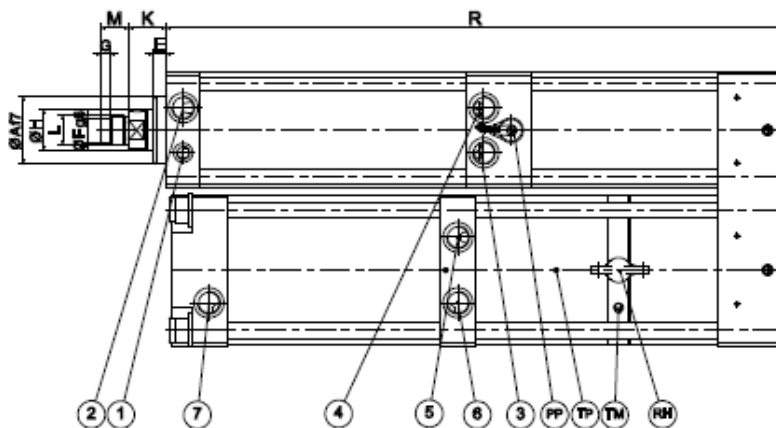
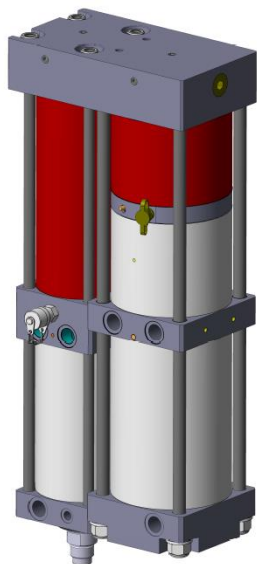


Versione in parallelo
4 potenze disponibili da 24 a 301 kN
pressione aria 6 - 9 bar
corsa totale 200 - 300 mm
corsa lavoro 10 - 20 mm
corse speciali a richiesta

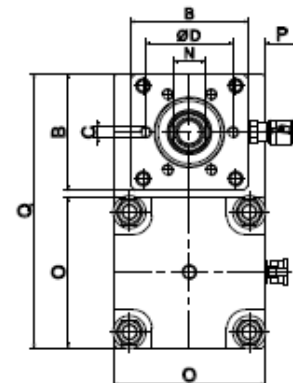
In parallel version
4 powers available from 24 to 301 kN
6 - 9 bar air pressure
200 - 300 mm total stroke
10 - 20 mm work stroke
special strokes under demand

DATI TECNICI E DIMENSIONI • SPECIFICATIONS AND DIMENSIONS

versione version	sforzo force max kN	①	②	③	④	⑤	⑥	⑦
UPP.40	42	1/8	3/8	3/8	3/8	3/8	3/8	3/8
UPP.80	72							
UPP.150	148	1/2	1/2	1/2	1/2	1/2	1/2	1/2
UPP.300	301							3/4



LEGENDA PAG. 1



DATI TECNICI E DIMENSIONI • SPECIFICATIONS AND DIMENSIONS

versione version	pressione max aria max air pressure bar	potenza power kN	corsa totale total stroke mm	corsa lavoro work stroke mm	sforzo lavoro work effort kn 6 bar 9	sforzo avvicinam. approach. effort daN - 6 bar	sforzo ritorno return effort daN - 6 bar	Ø A	B	C	D	E	Ø F	G	Ø H	K	L	M	N	O	R	Q	P
UPP	6	-	200 300	10	42	-	250	50	87	6M18X15	64	10	18	7	30	28,5	20	24	111	558	201	25	
	-	9	40	200 300	20	24														35			543 753
UPP	6	-	200 300	10	72	-	450	70	111	6M10X16	88	10	26	7	45	35	25	36	136	570	251	25	
	-	9	80	200 300	20	46														69			570 770
UPP	6	-	200 300	10	148	-	700	75	136	M16X25	100	15	26	7	50	36	25	41	170	686	310	21	
	-	9	150	200 300	20	94														142			686 786
UPP	6	-	200 300	10	301	-	1125	100	170	6M20X30	132	18	-	-	60	47	35	52	212	747	392	17	
	-	9	300	200 300	20	184														275			686 786

Unità di potenza pneumo-idraulica – versione UPP

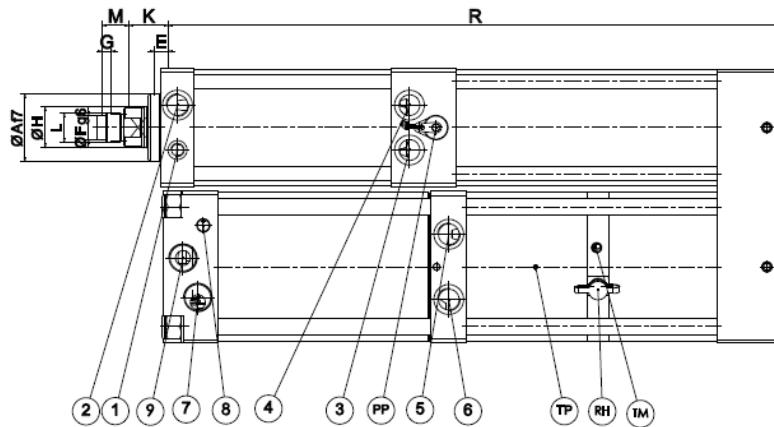
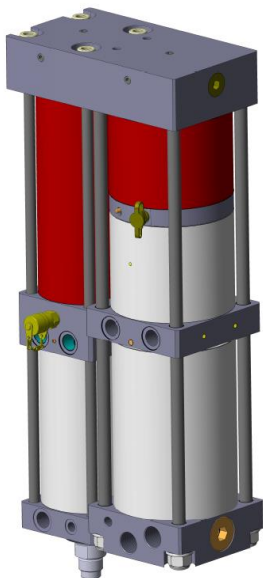
Pneumo-hydraulic power unit – UPP version



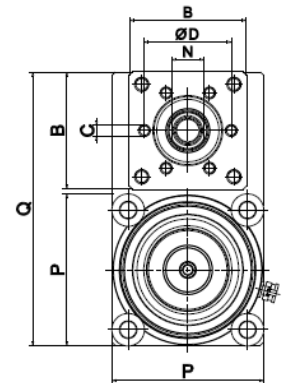
DATI TECNICI E DIMENSIONI • SPECIFICATIONS AND DIMENSIONS

VERSIONE “NG”
“NG”VERSION

versione version	sforzo force max kN	①	②	③	④	⑤	⑥	⑦	⑧	⑨
UPP.40 NG	42	1/8	3/8	3/8	3/8	3/8	3/8	3/8	1/8	1/4
UPP.80 NG	72		1/2	1/2	1/2					1/2



LEGENDA PAG. 1



DATI TECNICI E DIMENSIONI • SPECIFICATIONS AND DIMENSIONS

versione version	pressione max aria max air pressure bar	potenza power kN	corsa totale total stroke mm	corsa lavoro work stroke mm	sforzo lavoro work effort kn 6 bar 9	sforzo avvicinam. approach. effort daN-6 bar	sforzo ritorno return effort daN-6 bar	Ø A	B	C	D	E	Ø F	G	Ø H	K	L	M	N	O	R	Q	P	
UPP	6	-	200 300	10	42	-	250	220	50	87	6M18X15	64	10	18	7	30	28,5	M22X2	20	24	111	558	201	25
	-	9	200 300	20	24	35																543 753		
UPP	6	-	200 300	10	72	-	450	375	70	111	6M10X16	88	10	26	7	45	35	M30X2	25	36	136	570	251	25
	-	9	200 300	20	46	69																570 770		