



Yuken can offer a large volume pump described below.
Consult Yuken for the details.

Model Numbers	500F-**-*-RL-20/2080/2090
Max Operating Pressure MPa (PSI)	7 (1020)
Output flow at 7 MPa (1020 PSI) and 1200 r/min with 20 mm ² /s (100SSU) fluid L/min (U.S.GPM)	324-530 (85.6-140.0)
Shaft Speed Range r/min	600-1200

Specifications

Model Numbers	Geometric Displacement cm ³ /rev (cu.in/rev)	Maximum Operating Pressure MPa (PSI)	Output Flow & Input Power	Shaft Speed Range r/min		Approx. Mass kg (lbs.)	
				Max.	Min.	Foot Mtg.	Flange Mtg.
50T-7	6.8 (.415)	7 (1020)	Refer to Pages 7 & 8.	2000 ^{★2}	800	10.5 (23.2)	9.0 (19.8)
50T-12	11.6 (.708)			1800 ^{★2}	600		
50T-17	16.5 (1.007)						
50T-23	22.9 (1.397)						
50T-26	25.9 (1.580)						
50T-36	36.0 (2.20)						
150T-48	47.7 (2.91)	7 (1020)	Refer to Pages 8 & 9.	1500 ^{★2}	600	26 (57.3)	25 (55.1)
150T-61	61.1 (3.73)			1200			
150T-75	74.9 (4.57)						
150T-94	93.6 (5.71)						
150T-116	115.6 (7.05)						
250F-134	133.9 (8.17)	7 (1020)	Refer to Page 10.	1200	600	120 (265)	113 (249)
250F-153	153.1 (9.34)						
250F-176	175.8 (10.73)						
250F-200	201.0 (12.27)						

★1. The maximum operating pressure is constant irrespective of fluid types.

★2. If phosphate ester type fluids are used, the maximum speed is restricted to 1200 r/min.

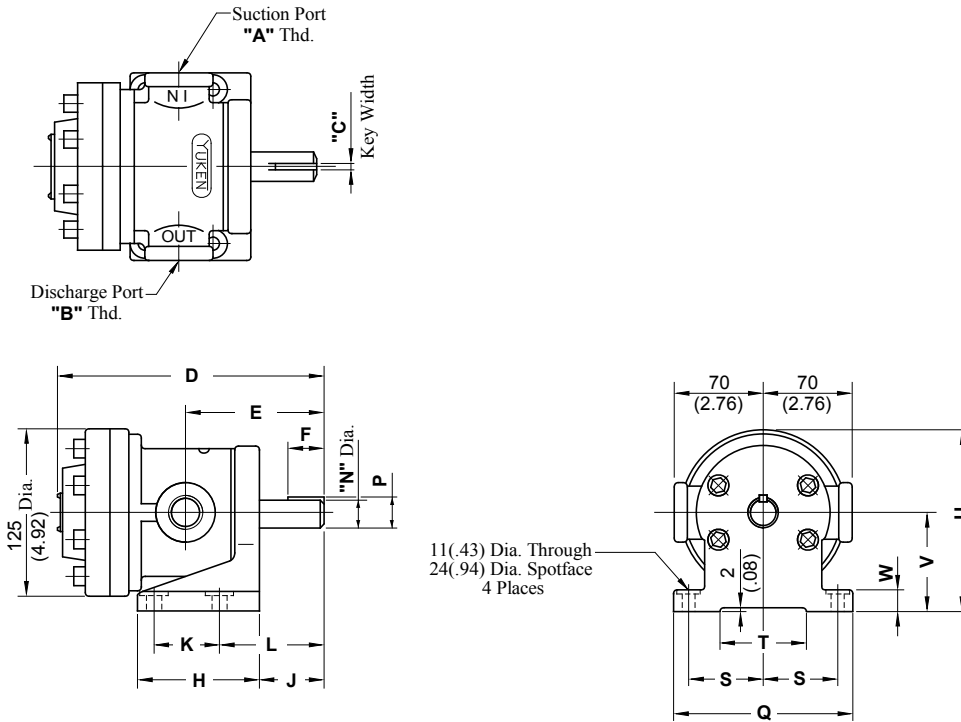
Model Number Designation

F-	50T	-7	-L	-R	L	-30	*
Special Seals	Series Number	Nominal Displacement cm ³ /rev	Mounting	Direction of Rotation	Discharge Port Position	Design Number	Design Standard
F: For phosphate ester type fluids (Omit if not required)	50T (Threaded Connections)	7, 12, 17, 23, 26, 36	L: Foot Mtg.	(Viewed from Shaft End)		30	Refer to ★2
	150T (Threaded Connections)	48, 61, 75, 94, 116	F: Flange Mtg.	R: Clockwise ★1 (Normal)	L: On Left Hand (Normal)	40	
	250F (Flanged Connections)	134, 153, 176, 200				40	

★1. Available to supply pump with anti-clockwise rotation. Consult Yuken for details.

★2. Design Standards: None..... Japanese Standard "JIS"
80 European Design Standard
90 N. American Design Standard

Foot Mtg.:50T-*-L-RL-30/3080/3090

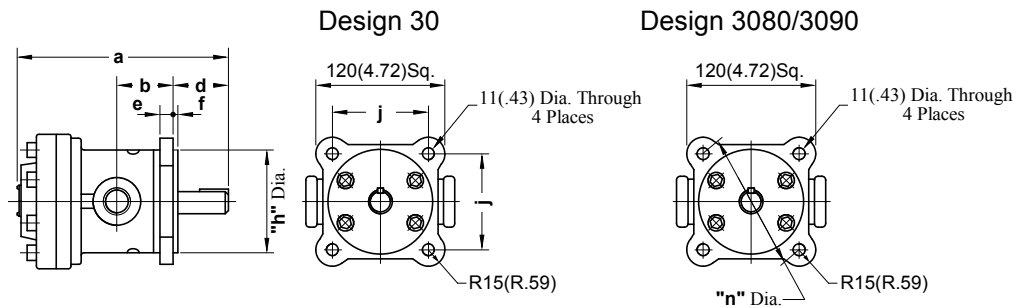


Model Numbers	"A" Thd.	"B" Thd.	Dimensions mm (Inches)									
			C	D	E	F	H	J	K	L	N	P
50T-*-L-RL-30	Rc 1	Rc 3/4	5.000(.1969) 4.970(.1957)	201 (7.91)	104 (4.09)	28 (1.10)	90 (3.54)	50 (1.969)	50 (1.969)	78 (3.07)	22.000(.8661) 21.979(.8653)	24.000(.945) 23.849(.939)
50T-*-L-RL-3080	1 BSP.F	3/4 BSP.F	4.760(.1874)	202 (7.95)	104.8 (4.13)	29 (1.14)	97 (3.82)	50.8 (2.000)	50.8 (2.000)	82.5 (3.25)	19.050(.7500)	21.570(.849)
50T-*-L-RL-3090	1 NPT	3/4 NPT	4.742(.1867)								19.029(.7429)	21.431(.844)

Model Numbers	Dimensions mm (Inches)					
	Q	S	T	U	V	W
50T-*-L-RL-30	140 (5.51)	58 (2.283)	65 (2.56)	137.5 (5.41)	75 (2.95)	15 (.59)
50T-*-L-RL-3080	130	50.8	50	132.3	69.8	12.7
50T-*-L-RL-3090	(5.12)	(2.000)	(1.97)	(5.21)	(2.75)	(.50)

**DIMENSIONS IN
MILLIMETRES (INCHES)**

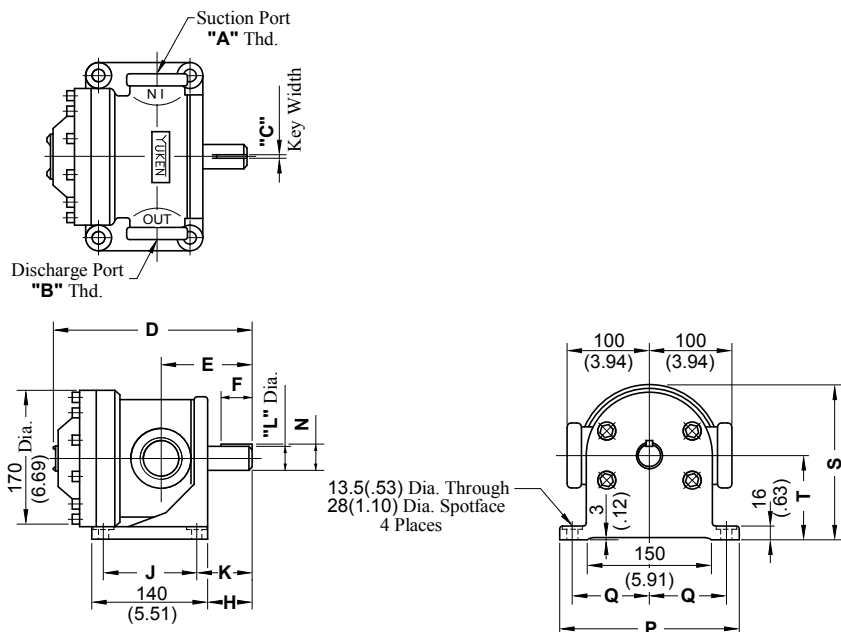
Flange Mtg.:50T-*-F-RL-30/3080/3090



Model Numbers	Dimensions mm (Inchs)							
	a	b	d	e	f	h	j	n
50T-*-F-RL-30	201 (7.91)	54 (2.13)	50 (1.97)	15 (.59)	5 (.20)	96.000(3.780) 95.565(3.778)	90 (3.543)	—
50T-*-F-RL-3080	202	49.3	55.6	12.7	4.7	95.200(3.748)	—	127
50T-*-F-RL-3090	(7.95)	(1.94)	(2.19)	(.50)	(.19)	95.165(3.746)		(5.000)

• For other dimensions, refer to "Foot Mtg.".

Foot Mtg.:150T-*-L-RL-40/4080/4090

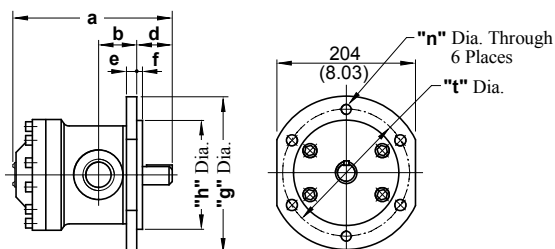


Model Numbers	"A" Thd.	"B" Thd.	Dimensions mm (Inches)					
			C	D	E	F	H	J
150T-*-L-RL-40	Rc 1-1/2	Rc 1-3/4	7.000(.2756) 6.964(.2742)	237 (9.33)	108.5 (4.27)	32 (1.26)	53 (2.09)	114 (4.488)
150T-*-L-RL-4080	1-1/2 BSP.F	1-1/4 BSP.F	4.760(.1874)	237.5 (9.35)	109 (4.29)	38 (1.50)	54 (2.18)	114.3(4.500)
150T-*-L-RL-4090	1-1/2 NPT	1-1/4 NPT	4.742(.1867)					

Model Numbers	Dimensions mm (Inches)						
	K	L	N	P	Q	S	T
150T-*-L-RL-40	66 (2.60)	30.000 (1.1811) 29.979 (1.1803)	33.000 (1.299) 32.843 (1.293)	226 (8.86)	98.5 (3.878)	186.5 (7.34)	101.5 (3.996)
150T-*-L-RL-4080	66.7 (2.63)	25.400 (1.0000)	27.400 (1.079)	222 (8.74)	98.4 (3.874)	186.6 (7.35)	101.6 (4.000)
150T-*-L-RL-4090		25.379 (.9992)	27.221 (1.072)				

DIMENSIONS IN
MILLIMETRES (INCHES)

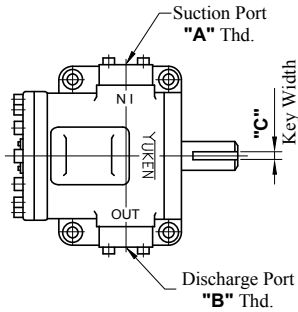
Flange Mtg.:150T-*-F-RL-40/4080/4090



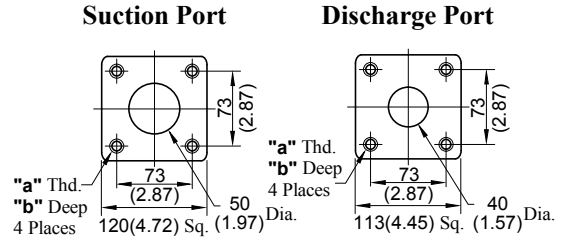
Model Numbers	Dimensions mm (Inches)									
	a	b	d	e	f	g	h	n	t	
150T-*-F-RL-40	237 (9.33)	58 (2.28)	50.5 (1.99)	17.5 (.69)	5 (.20)	230 (9.06)	160.000 (6.299) 159.960 (6.297)	13.5 (.53)	187 (7.36)	
150T-*-F-RL-4080	237.5 (9.35)	58.2 (2.29)	50.8 (2.00)	16 (.63)	6.4 (.25)	228 (8.98)	158.750 (6.250) 158.674 (6.247)	17.5 (.69)	187.3 (7.37)	
150T-*-F-RL-4090										

• For other dimensions, refer to "Foot Mtg.".

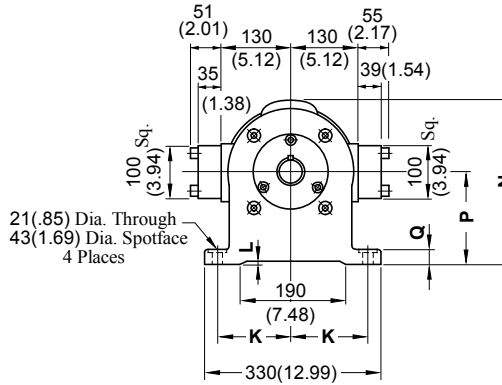
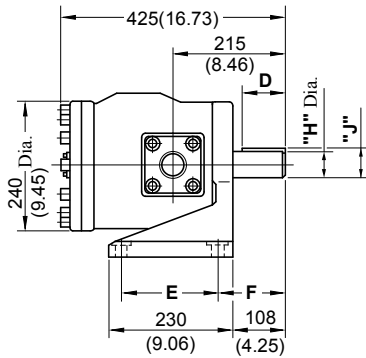
Foot Mtg.:250F-*-L-RL-40/4080/4090



For Reference: Dimensions of Pipe Flange Mounting Surface



Model Numbers	"a" Thd.	b mm (IN.)
250F-*-RL-40	M 16	29 (1.14)
250F-*-RL-4080	M 16	29 (1.14)
250F-*-RL-4090	5/8-11 UNC	25 (.98)

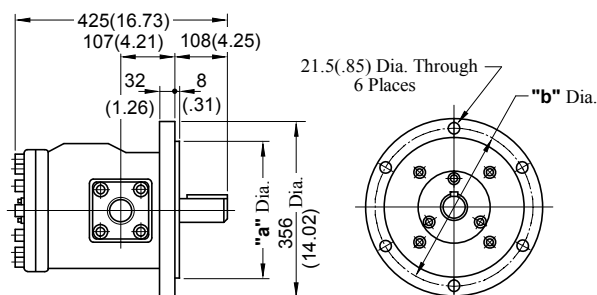


Model Numbers	"A" Thd.	"B" Thd.	Dimensions mm (Inches)				
			C	D	E	F	H
250F-*-L-RL-40	Rc 2	Rc 1-1/2	12.000 (.4724) 11.957 (.4707)	85 (3.35)	180 (7.087)	133 (5.24)	50.000 (1.9685) 49.975 (1.9675)
250F-*-L-RL-4080	2 BSP.F	1-1/2 BSP.F	12.700 (.5000)	87.3 (3.44)	177.8 (7.000)	133.4 (5.25)	50.800 (2.0000) 50.770 (1.9988)
250F-*-L-RL-4090	2 NPT	1-1/2 NPT	12.673 (.4989)				

Model Numbers	Dimensions mm (Inches)					
	J	K	L	N	P	Q
250F-*-L-RL-40	53.000 (2.087) 52.785 (2.078)	140 (5.512)	5 (.20)	305 (12.01)	170 (6.69)	28 (1.10)
250F-*-L-RL-4080	54.900 (2.161)	139.7 (5.500)	6.5 (.26)	306.5 (12.07)	171.5 (6.75)	29.5 (1.16)
250F-*-L-RL-4090	54.640 (2.151)					

DIMENSIONS IN MILLIMETRES (INCHES)

Flange Mtg.:250F-*-F-RL-40/4080/4090

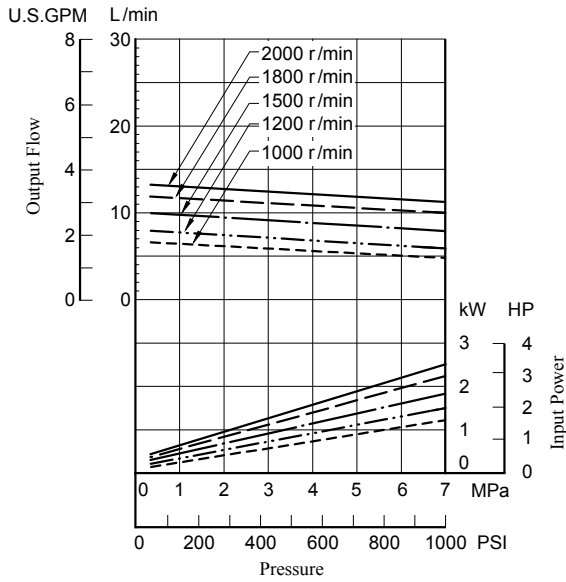


Model Numbers	Dimensions mm (Inches)	
	a	b
250F-*-F-RL-40	280.000 (11.024) 279.948 (11.022)	318 (12.52)
250F-*-F-RL-4080	279.370 (10.999)	317.5 (12.50)
250F-*-F-RL-4090	279.290 (10.996)	

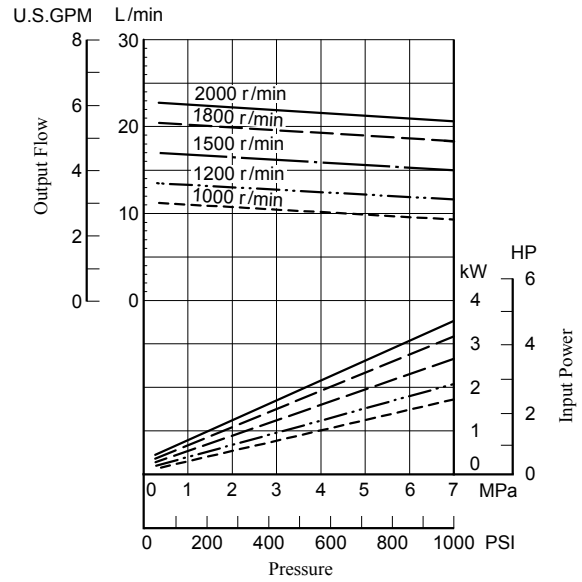
• For other dimensions, refer to "Foot Mtg.".

Viscosity 20 mm²/s (100 SSU) [ISO VG32 Oils, 50蛸 (122蚌)]

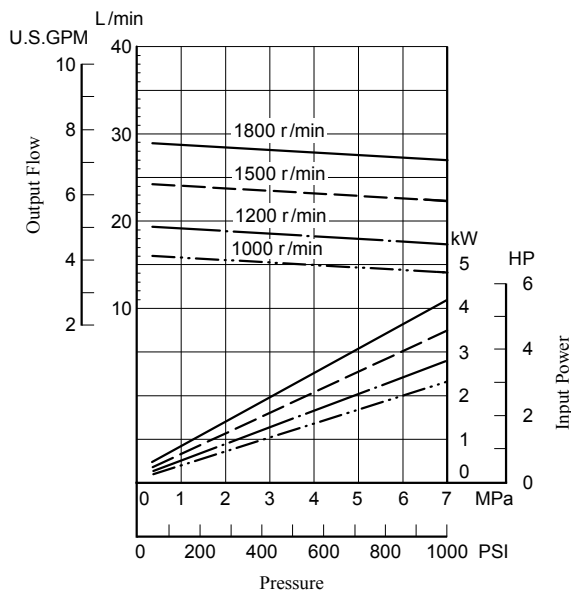
● 50T-7



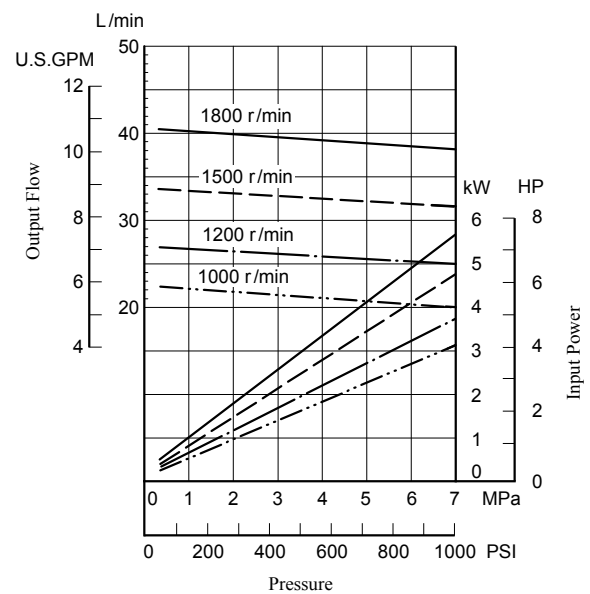
● 50T-12



● 50T-17

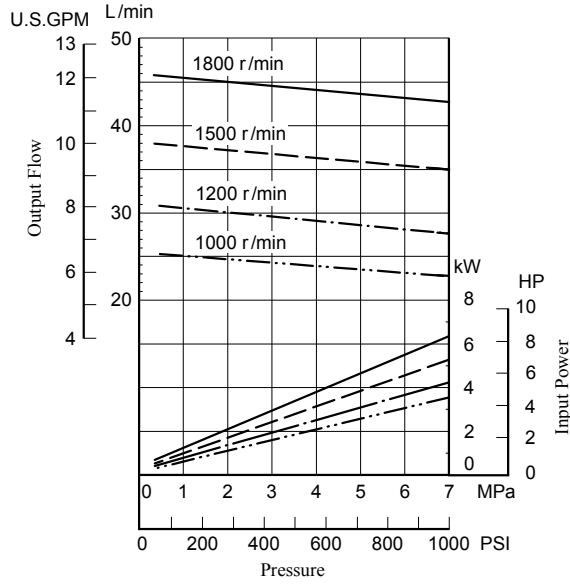


● 50T-23

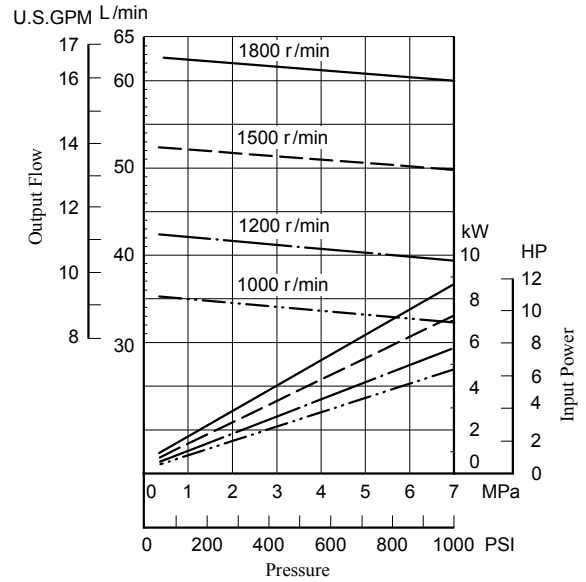


Viscosity 20 mm²/s (100 SSU) [ISO VG32 Oils, 50 蚌 (122 蚌)]

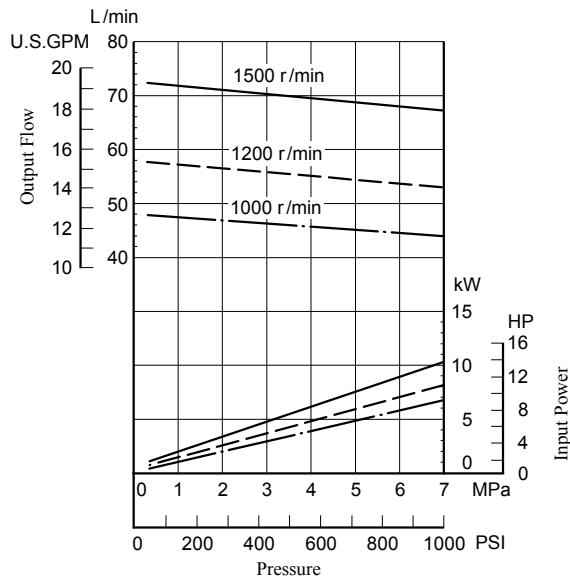
● 50T-26



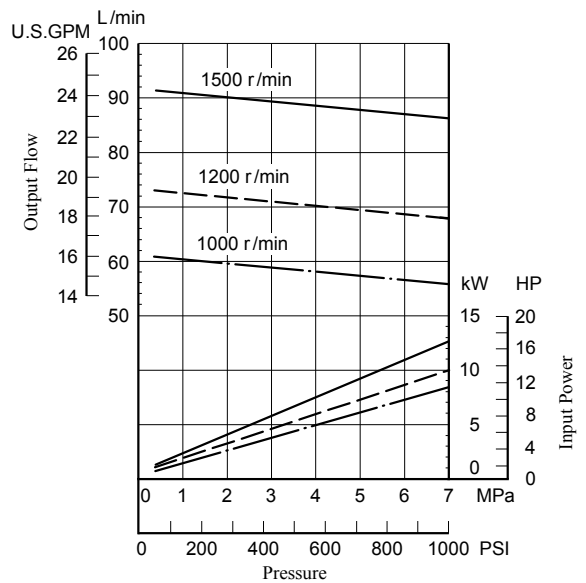
● 50T-36



● 150T-48

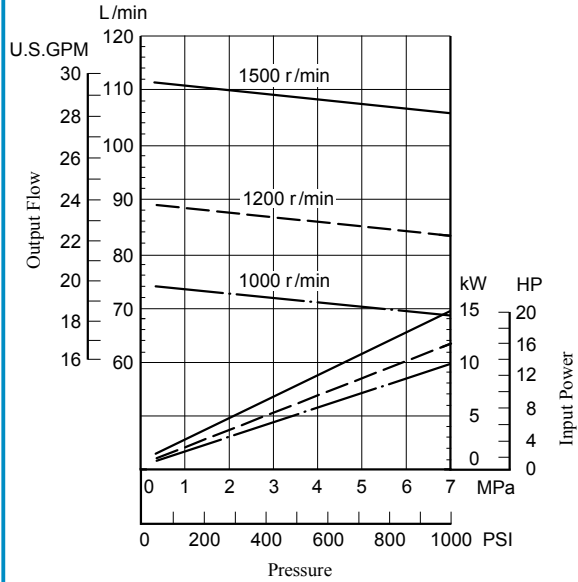


● 150T-61

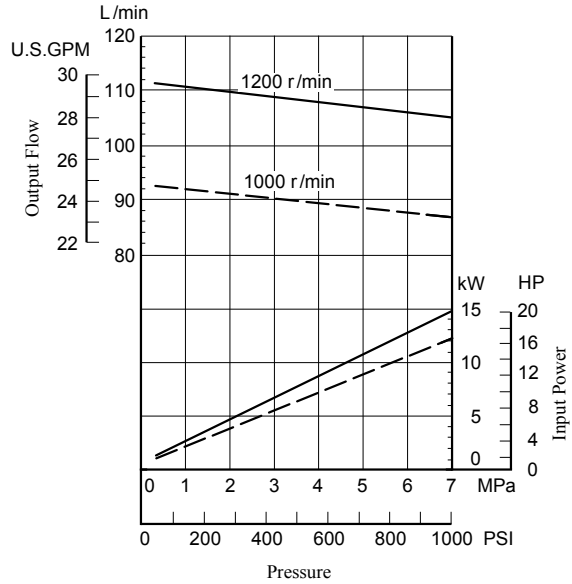


Viscosity 20 mm²/s (100 SSU) [ISO VG32 Oils, 50 蛭 (122 蚌)]

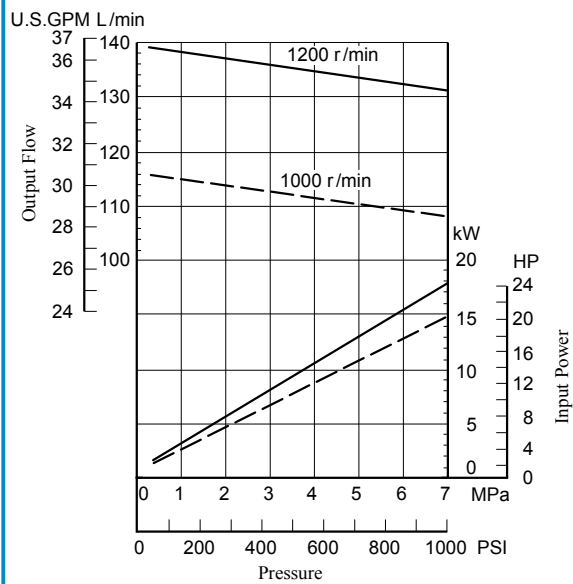
● 150T-75



● 150T-94

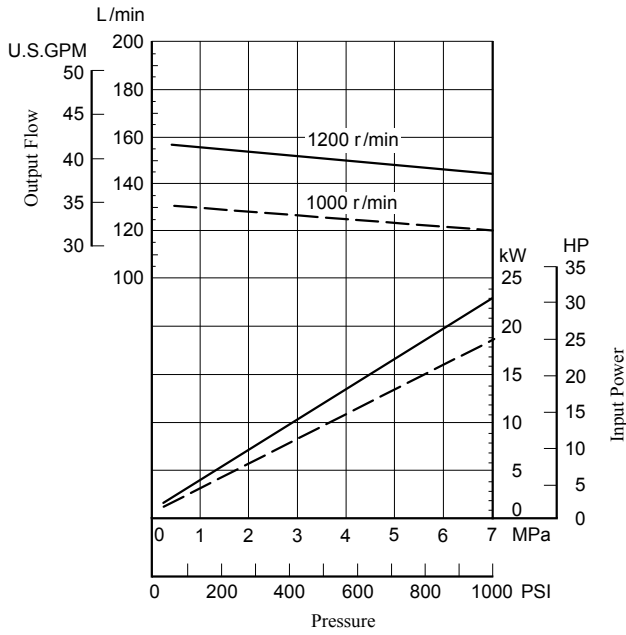


● 150T-116

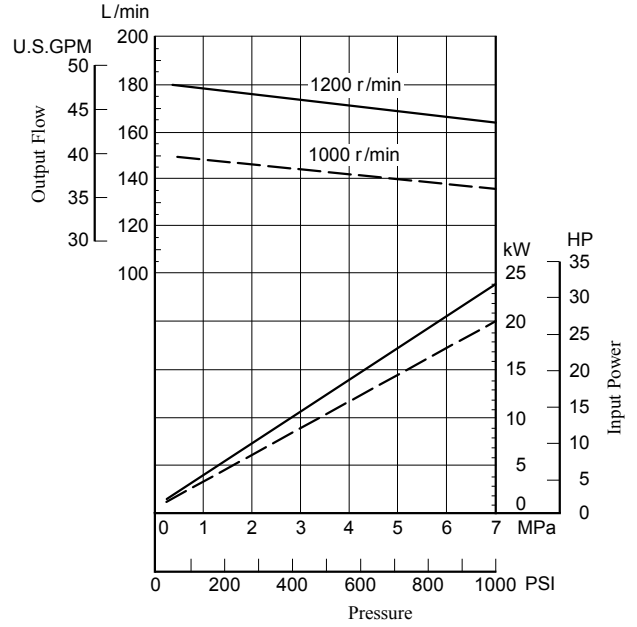


Viscosity 20 mm²/s (100 SSU) [ISO VG32 Oils, 50 ㄱ (122 蚌)]

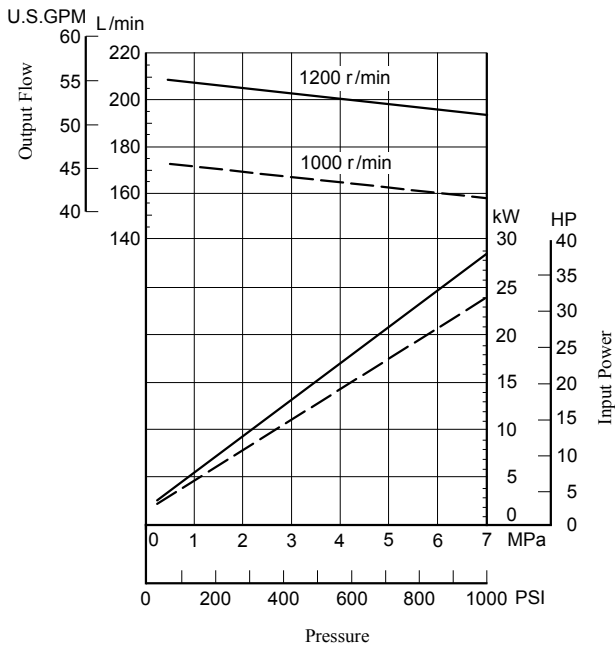
● 250F-134



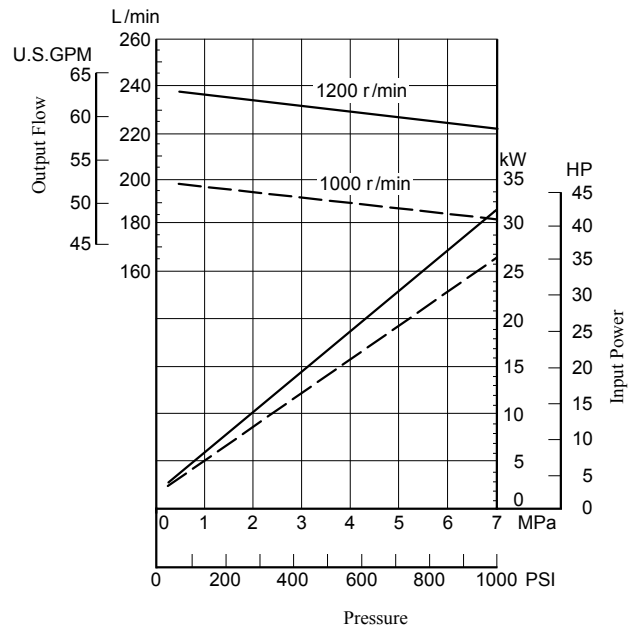
● 250F-153



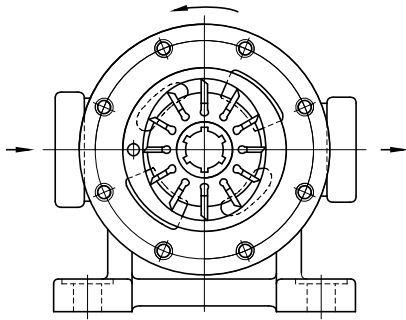
● 250F-176



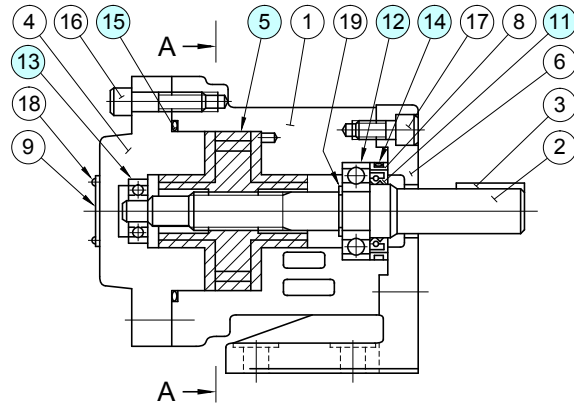
● 250F-200



50T-*-*-RL-30/3080/3090
150T-*-*-RL-40/4080/4090



Section A-A



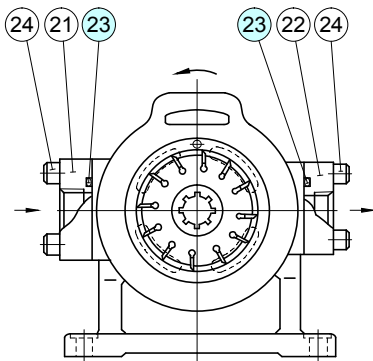
Item & Name Model Numbers	⑤ Cartridge Kit	⑪ Oil Seal	⑭ O-Ring	⑮ O-Ring	⑫ Bearing	⑬ Bearing	Seal Kit ² Numbers
50T-7-*-RL-30*	C50-7-30	ISPD25388	SO-NA-P41	SO-NA-A234	6204	6200	KS-50T-30
50T-12-*-RL-30*	C50-12-30						
50T-17-*-RL-30*	C50-17-30						
50T-23-*-RL-30*	C50-23-30						
50T-26-*-RL-30*	C50-26-30						
50T-36-*-RL-30*	C50-36-30						
150T-48-*-RL-40*	C150-48-40	ISPD32427	SO-NA-P46	SO-NA-A248	6205	6203	KS-150T-40
150T-61-*-RL-40*	C150-61-40						
150T-75-*-RL-40*	C150-75-40						
150T-94-*-RL-40*	C150-94-40						
150T-116-*-RL40*	C150-116-40						

★1. For pumps for phosphate ester type hydraulic fluids, seals are different from the above. Please contact us. ★2. Seal kits consist of ⑪ (oil seal) and ⑭ and ⑮ (o-rings).

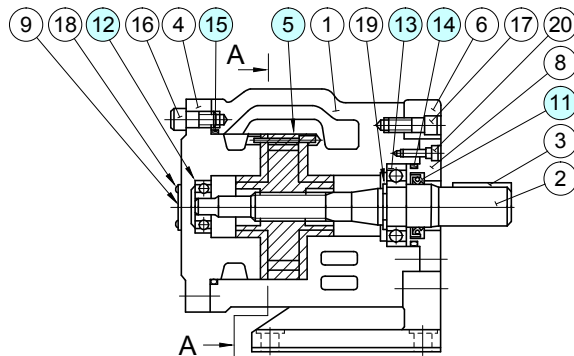
⚠ CAUTION

When making replacement of seals, bearings or cartridge kits, please do it carefully after reading through the relevant instructions in the Operator's Manual.

250F-*-*-RL-40/4080/4090



Section A-A



Item & Name Model Numbers	⑤ Cartridge Kit	⑪ Oil Seal	⑭ O-Ring	⑮ O-Ring	⑲ O-Ring	⑬ Bearing	⑫ Bearing	Seal Kit ² Numbers
250F-134-*-RL-40*	C250-134-40	ISPD527512	SO-NA-G95	SO-NB-G165	SO-NB-G60	6309	6305	KS-250F-40
250F-153-*-RL-40*	C250-153-40							
250F-176-*-RL-40*	C250-176-40							
250F-200-*-RL-40*	C250-200-40							

★1. For pumps for phosphate ester type hydraulic fluids, seals are different from the above. Please contact us. ★2. Seal kits consist of ⑪ (oil seal) and ⑭ and ⑮ and ⑲ (o-rings).