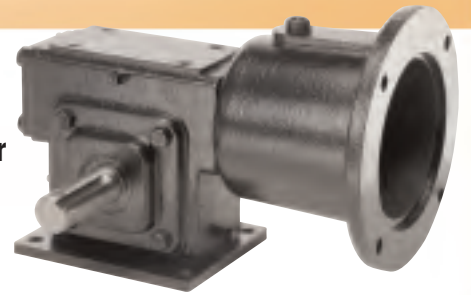


MDTS - CDTs Single Reduction Models

MDTS
Worm-On-Top
Quill Input Adaptor
Solid Output Shaft
Base Mount

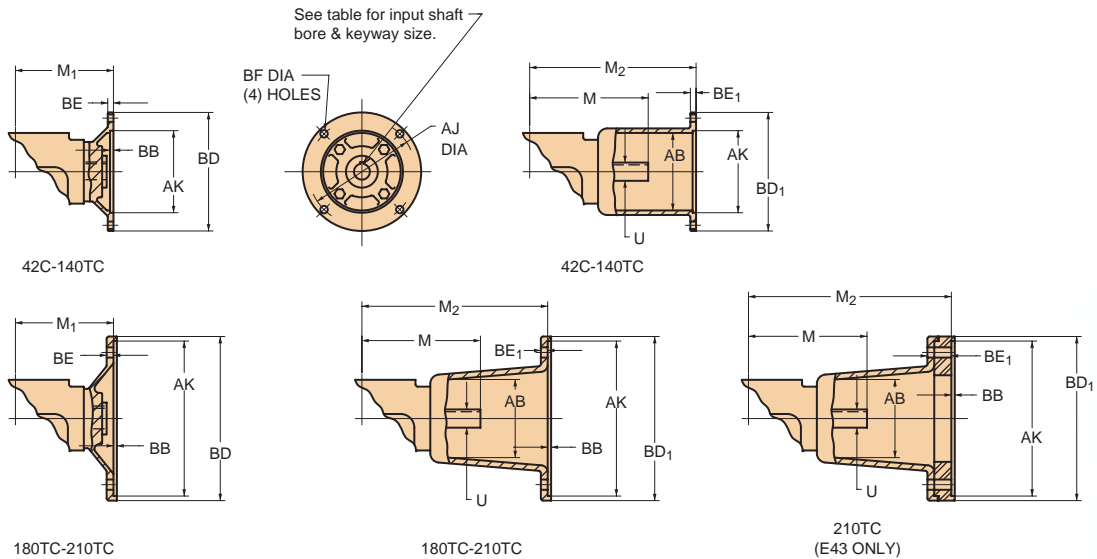


CDTS
Worm-On-Top
Coupled Input Adaptor
Solid Output Shaft
Base Mount



Couplings available, see page 106 for selection chart.

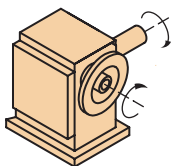
DIMENSIONS



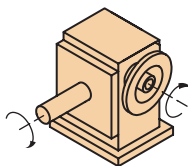
Size	QUILL INPUT ADAPTOR				COUPLED INPUT ADAPTOR														
	M ₁ 42C-48C	M ₁ 56C-140TC	M ₁ 180TC	M ₁ 210TC	42C-48C			56C-140TC			180TC			210TC			M	U	KEYWAY
					AB	M ₂	BE ₁	AB	M ₂	BE ₁	AB	M ₂	BE ₁	AB	M ₂	BE ₁			
E13	3.56	3.63*	NA	NA	2.50	6.81	.38	3.00	6.75	.31	NA			NA			4.13	.625	3/16x3/32
E17	4.06	4.06	NA	NA	2.50	7.56	.38	3.75	7.50	.38	3.75	8.44	.50	NA			4.75	.750	3/16x3/32
E20	4.06	4.06	NA	NA	2.50	7.56	.38	3.75	7.50	.38	3.75	8.44	.50	NA			5.00	.750	3/16x3/32
E24	NA	5.38	5.38	NA	NA			4.13	9.13	.38	4.25	10.19	.50	NA			6.50	1.000	1/4x1/8
E26	NA	5.38	5.38	NA	NA			4.13	9.13	.38	4.25	10.19	.50	NA			6.50	1.000	1/4x1/8
E30	NA	5.56	5.56	NA	NA			4.13	9.75	.38	4.75	10.88	.50	4.75	10.88	.50	7.00	1.000	1/4x1/8
E35	NA	5.81	5.81	NA	NA			4.13	10.00	.38	4.75	11.13	.50	4.75	11.13	.50	7.38	1.000	1/4x1/8
E43	NA	6.63	6.63	6.63	NA			4.13	10.81	.38	4.75	11.94	.50	4.75	12.88	1.44	8.19	1.250	1/4x1/8

*56C adaptor only

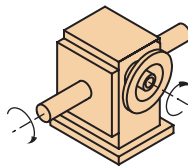
AVAILABLE SHAFT ARRANGEMENTS AND RELATIVE SHAFT ROTATIONS



ASSEMBLY R



ASSEMBLY L



ASSEMBLY LR

The input shaft may be driven in either direction.

INPUT ADAPT. DIM.	42C 48C	56C	140TC	180TC	210TC
AJ	3.75	5.88	5.88	7.25	7.25
AK	3.00	4.50	4.50	8.50	8.50
BB	.19	.19	.19	.19	.19
BD	4.50	6.50	6.50	9.00	9.00
BD ₁	4.50	6.63	6.63	9.00	9.00
BE	.34	.31	.31	.38	.38
BF	.281	.406	.406	.531	.531
KEYWAY	1/8 x 1/16	3/16 x 3/32		1/4 x 1/8	5/16 x 5/32
BORE	^{+0.001} -.000	.5005*	.6255	.8755	1.1255

*42C adaptor has .3755 bore, 3/32 x 3/64 keyway



2D DRAWINGS & 3D MODELS
www.WINSMITH.com

