

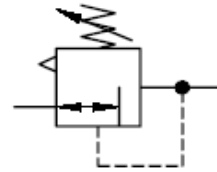
# Regulator-Miniature R00

<b>Model and Port Size</b>	G1/8" R00-C1-L00	R00-C1-000	R00-C1-H00
	G1/4" R00-C2-L00	R00-C2-000	R00-C2-H00
<b>Adjusting Range</b>	0,1 - 3,5 bar	0,15 - 7 bar	0,5 - 10 bar
<b>Maximum Supply Pressure</b>	max. 28 bar		
<b>Gauge Port</b>	G 1/8"		
<b>Mounting Position</b>	arbitrary		
<b>Operating Temperature</b>	max.60°C		
<b>Design</b>	Membrane Regulator with Relieving		
<b>Weight</b>	150 g without Gauge		
<b>Mounting Method</b>	Mounting Hole Ø 30,5 or Wall Mounting Bracked		
<b>Body Material</b>	Zinc		



**Accessories:**

<b>Gauge</b>	49- 06/40 Pressure 0- 6 bar
	49-010/40 Pressure 0-10 bar
	49-016/40 Pressure 0-16 bar
<b>Wall Mounting Bracked</b>	SDH-C0-000
<b>Panel Nut ( brass )</b>	SDM-C0-000-M30x1,5



**Scope of delivery:**

Regulator with Plastic Panel Nut and two plugs for Port Gauge

**Flow Capacity Diagram:**

