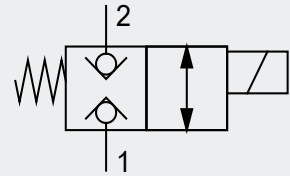


## 2/2-way poppet valve MSVT



solenoid operated  
operating pressure max. 350 bar  
volume flow max. 40 l/min



080120\_MSVT\_e  
01.2019

### Table of contents

Contents	Page
Characteristics	1
Technical Data	2
Performance	2
Dimensions	3
Type code	4
Accessories and additional information	5

### Characteristics

- screw-in poppet valve
- pilot operated or direct operated available
- normally open or normally closed models available
- maintenance-free

## Technical Data

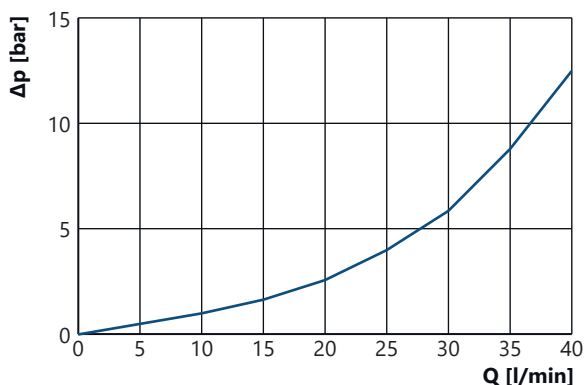
<i>Hydraulic</i>	Operating pressure max.:	350 bar (MSVT 20 and MSVT 21: 250 bar, flow from 1 to 2: 150 bar)
	Flow rate:	40 l/min (MSVT 20: 15 l/min, MSVT 21: 30 l/min)
	Flow direction:	from 2 to 1 (1 to 2)
	Hydraulic fluid:	mineral oil according to DIN 51524, others upon request
	Viscosity range:	3 - 400 cSt
	Filtration:	oil cleanliness according to ISO 4406 (1999) 18/16/13, filter with $\beta_{5(c)} > 200$

<i>Mechanic</i>	Design:	Screw-in valve
	Fluid temperature:	-10 °C to +80 °C
	Ambient temperature:	-20 °C to +50 °C
	Storage temperature:	-30 °C to +60 °C (non-condensing)
	Installation position:	any
	Weight:	0,31 kg
	Material:	valve parts: steel, coil: plastic seals: NBR
Surface protection:	burnished/zinc coated	

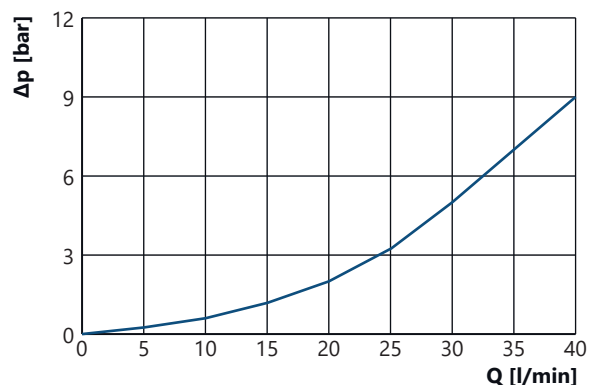
<i>Electric</i>	Nominal voltage:	12 V DC, 24 V DC
	Nominal resistance (R20):	8 $\Omega$ (12 V), 26 $\Omega$ (24 V)
	max. power consumption:	18 W (12 V), 22 W (24 V)
	Shifting-time:	100% ED
	Protection class:	IP65 correctly mounted and locked mating connector
	Electric termination:	Electric plug according to DIN EN 175301-803 (formerly DIN 43650) shape A

## Performance

Pressure drop diagram ( $\Delta p/Q$ ) MSVT-03 and MSVT-04

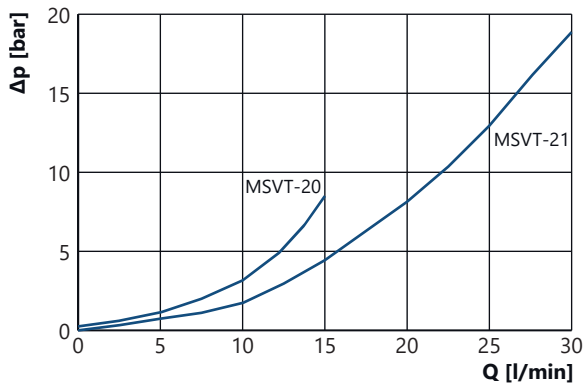


Pressure drop diagram ( $\Delta p/Q$ ) MSVT-07

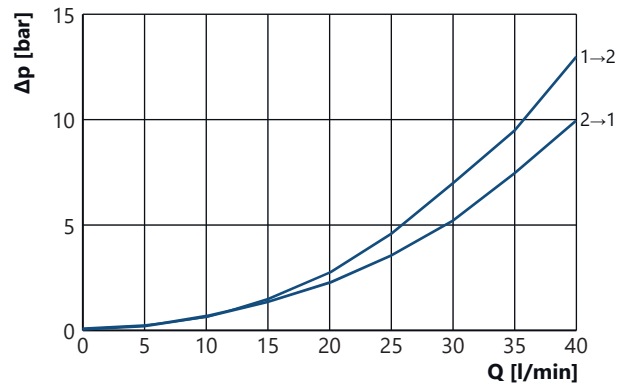


### Performance

Pressure drop diagram ( $\Delta p/Q$ ) MSVT-20 and MSVT-21



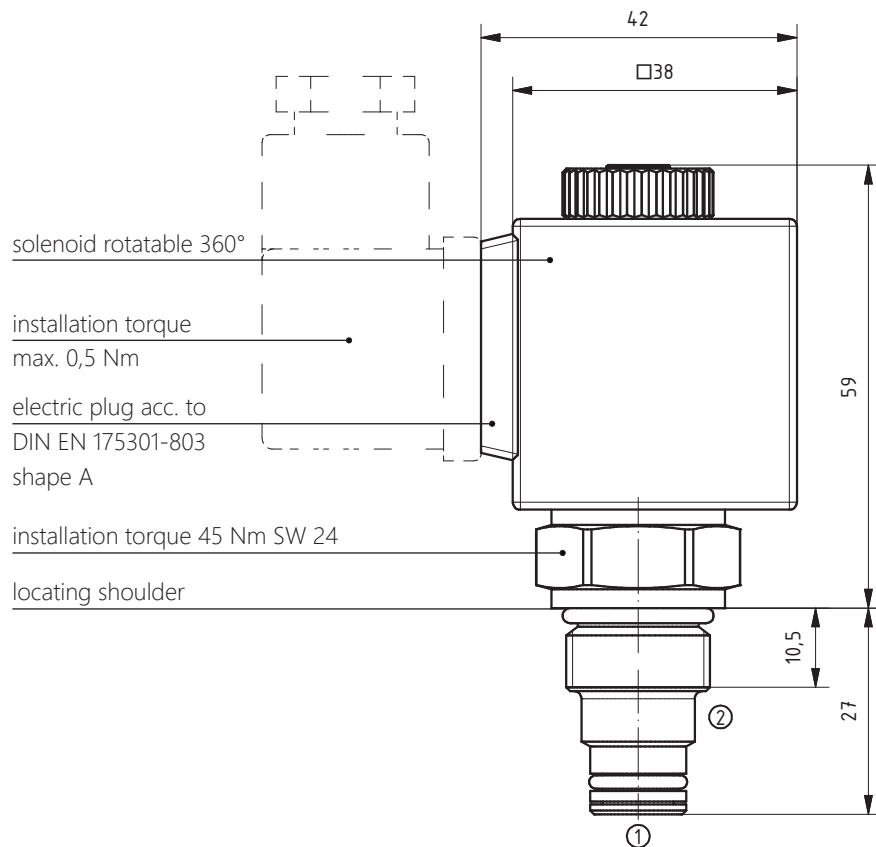
Pressure drop diagram ( $\Delta p/Q$ ) MSVT-22



*Test conditions* Oil: HLP 32, temperature: 40 °C (~32 cSt)

### Dimensions

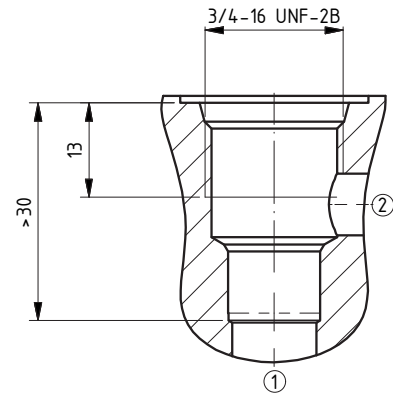
*Screw-in valve  
MSVT*



HM4/07 13 04

### Dimension

Cavity MSVT



HE4/14 31 03

**NOTE** For a detailed drawing of the cavity please see chapter 11 „general information“ or our online catalogue at [www.weber-hydraulik.com](http://www.weber-hydraulik.com).

### Type code



Model	
03	normally closed 
04	normally closed with manual override 
07	normally open 
20	bi-directional, normally closed (15 l/min) 
21	bi-directional, normally closed (30 l/min) 
22	bi-directional, normally closed 

Nominal voltage	
12 V	12 V DC
24 V	24 V DC

## Accessories and additional information

<i>Accessories / spare parts</i>	<b>Article:</b>	<b>Article number:</b>
	Socket connector DIN EN 175301-803, shape A, black	149.0007
	Socket connector DIN EN 175301-803, shape A, grey	149.0008
	Aluminium housing 3/8"	093.0024
	Steel housing 3/8"	153.0139

*Manual* Information regarding installation, set-up and maintenance can be found in our catalogue in chapter 11 under the category „*general operating manual*“ or will be provided upon request.



WEBER-HYDRAULIK ValveTech GmbH  
Felix-Wankel-Str. 4, 78467 Konstanz  
Phone: +49 7531 9748-0  
Fax: +49 7531 9748-44

[www.weber-hydraulik.com](http://www.weber-hydraulik.com)  
[info.de-k@weber-hydraulik.com](mailto:info.de-k@weber-hydraulik.com)

All rights reserved