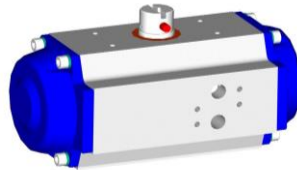
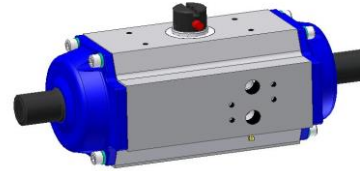


Size 012



Standard

Optional with
limit stop adjustment



Technical Data

Body material:	aluminium anodization acc. DIN 17611 (E6), pull out contour
End caps:	aluminium painted RAL 5002, Layer min. 60µm
End cap version:	union of Air -/ Spring End Cap
End cap screws:	material and Tensile Strength acc. A2 70, DIN 912
Weight:	double acting: 2,2 Kg; spring return with 10 springs: 2,3 Kg
Air inlet:	G 1/4"
Shaft:	blow- out- proof, pressure- balanced, 1-piece (series 5), 2-pieces (series 6)
Rotation mode:	clock- wise => double acting and spring to close anti- clock- wise => spring to open
Lubrication:	permanent
Piston support:	PTFE guiding tapes
Valve flange connection:	F05; flange acc. DIN 5211 with female square acc. DIN 3337
Solenoid valve:	VDI/ VDE 3845 (Namur)
Limit switches, positioners:	VDI/ VDE 3845 (Namur)
Position indicator:	red plastic indikator
Production:	acc. DIN EN ISO 9001
Actuator type:	rack and pinion
Operating pressure:	2 to 8 bar
Tightness test:	1,1 x max. operating pressure
Cycle times:	$t_{open} < 1,0$ sec., with solenoid valve $K_v=1,2$ nominal [m ³ / h], at 6 bar operating pressure $t_{close} < 1,0$ sec., with solenoid valve $K_v=1,2$ nominal [m ³ / h], at 6 bar operating pressure
Rotation:	90° standard, other options on request
Rotation tolerance:	0° / -1,5° and 90° / +1,5°
Limit stop adjustment:	only Serie 6: 0° -> -4° until + 8°; 90° -> +4° until - 8°;
Air Consumption:	theoret. 0,53 NI/ h at 1 bar (abs) per travel 0° - 90°
Leakage:	in new condition => max 2 NI/ h at 6 bar operating pressure after 500.000 cycles => max 10 NI/ h at 6 bar operating pressure
Life time:	cycles acc to DIN EN 15714-3
Operating temperature:	-20 bis + 80° C (standard)
Installation position:	any position possible
Medium:	air, other medium on request
Torques:	

	Air Supply Pressure/ bar						
	2	3	4	5	6	7	8
Theoretical figures ¹⁾ /Nm	24,7	37	49,3	61,6	74	86,3	98,6

¹⁾ min. efficiency > 90%

Spring torques and corresponding air torques please find in Revo catalogue, chapt. 3